



HYDR-STAR Fluid Control Company Limited

Add: Room 1710, Business-Building No.2, XiongChuYiHao, No.888, XiongChu Road, HongShan District, Wuhan City, Hubei Prov. China 430070

Tel : +86 27 87560060

Fax: +86 27 87569156

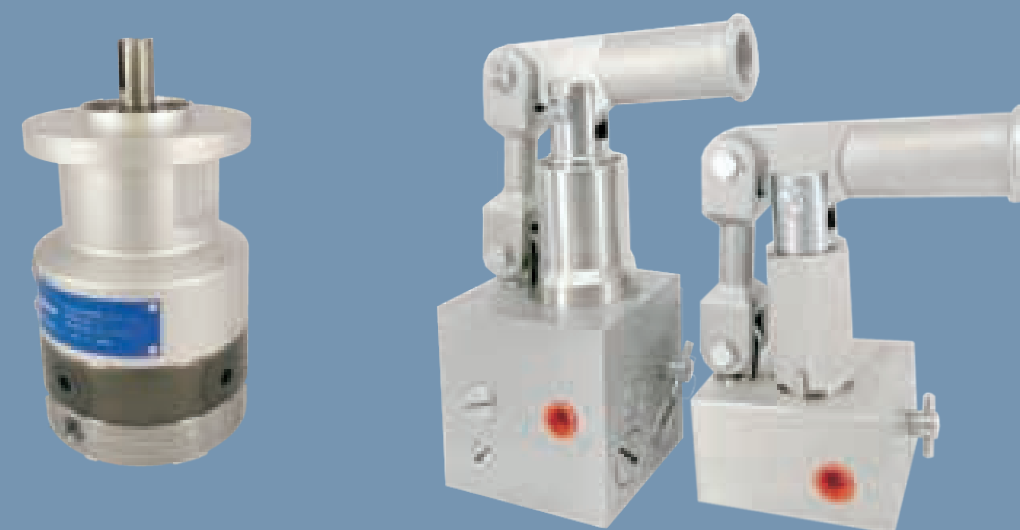
E-mail: sales@hydrstar.com

Web: www.hydrstar.com

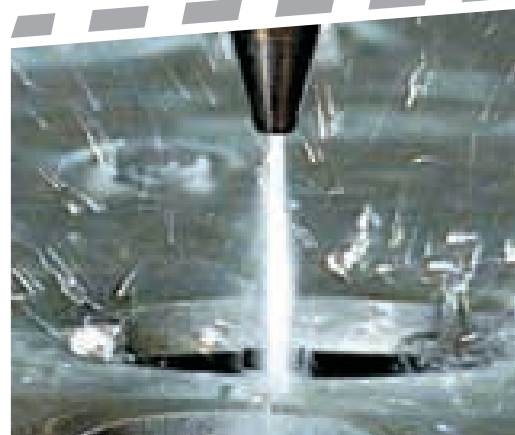
Agent :



HYDR-STAR FLUID CONTROL COMPANY LIMITED



Manual Pumps & Electrical Pumps



Waterjet Cutting



Aerospace



Chemical



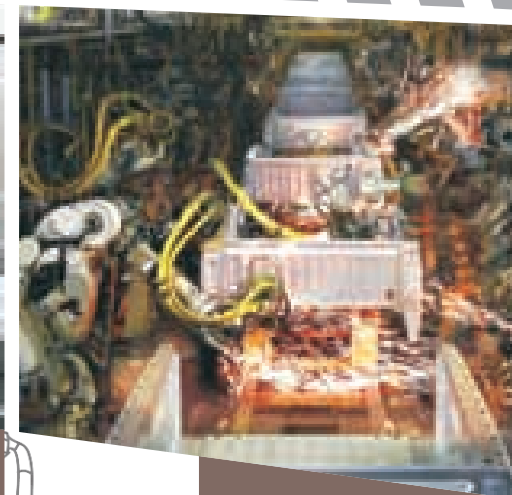
Petro



Waterblasting

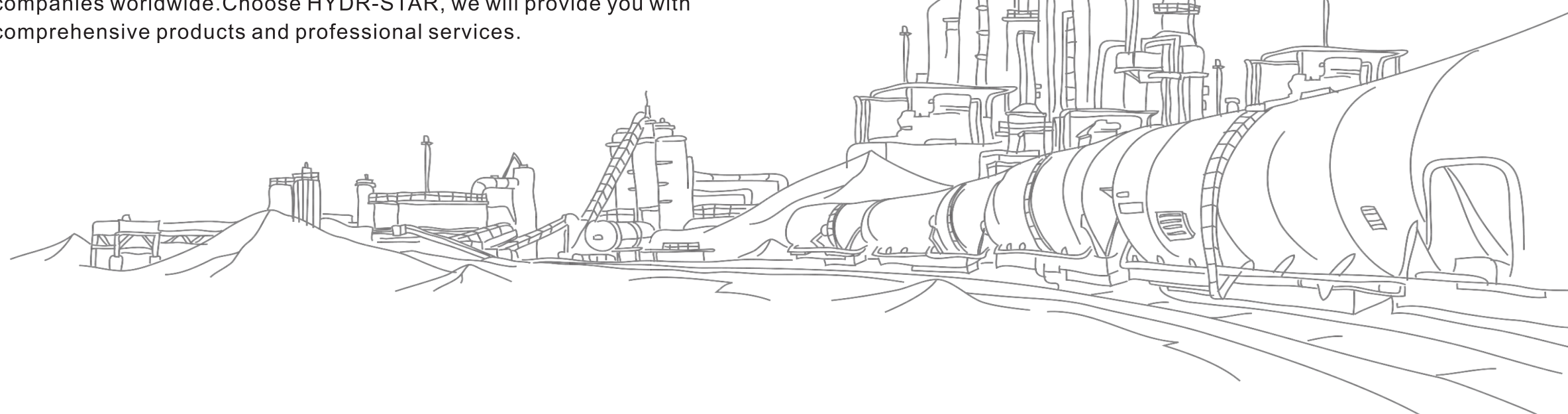


Process Controls



Automobile

HYDT-STAR's pumps and valves are widely used in various industries. We provide quality products and services for many outstanding companies worldwide. Choose HYDR-STAR, we will provide you with comprehensive products and professional services.



Contents

About HYDT-STAR

1

Manual Pump

3

Electrical Pump

5



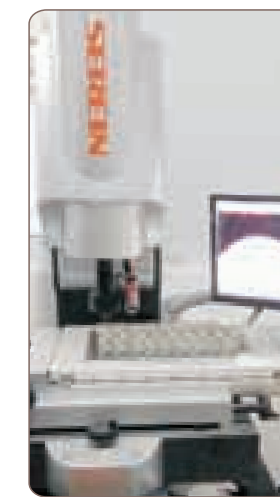
About HYDR-STAR

HYDR-STAR Fluid Control Company Limited specialize and focus on the R&D, design and manufacture of stainless steel instrumentation valves, high pressure valves, control valves, high pressure pumps and boosters with international standard.

The company occupies 54 acres and owns 20,000 square meters of modern workshop and office buildings; an engineering team with more than 15 years of professional fluid control technology; advanced testing and manufacturing equipment; complete quality control system; customer oriented, timely and professional sales team and superior services to provide high quality products and solutions for the global fluid control industry.

HYDR-STAR passed the ISO9001 quality management system certification and our products passes SIL and EAC certification. Our products are recognized by clients and customers in Middle East, European Union, Russia, China and other countries.

After years of hard work, HYDR-STAR has become an industry leader and has established list of regular customers from around the globe. Our products are being used in oil&gas, petrochemical, energy, mining, aerospace, military, automotive, firefighting and conventional hydraulic machinery Industries.



A corner of workshop

High
Precision
Lathe

Three
Coordinate
Measuring
Machine

VMC

Warehouse





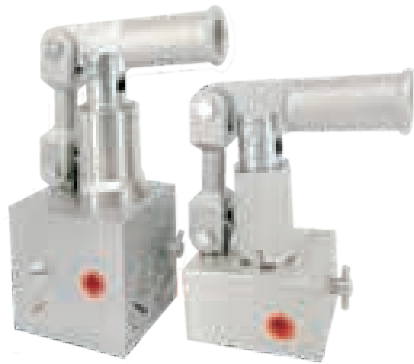
Manual Pump

Features

- ★ Can be repaired without removing the pump from system.
- ★ Replaceable pump spool.
- ★ Piston hardened and ground.
- ★ 26.5" handlebar reduces the operating force.

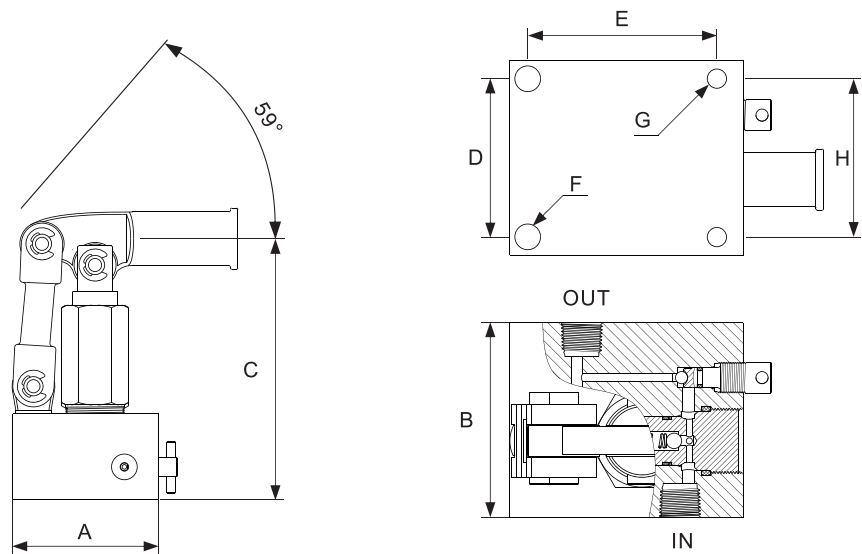
Description

These pumps provide a low cost efficient means for manually increasing pressure in a hydraulic system where emergency standby power is needed. Before increasing pressure, please use the handlebar to close the vent valve if there is one.



Performance and Specification

Single piston pump with vent



Ordering Code	MAX.Press.	VOL. per Stroke	Ports	Handle Load per 100psi
MP**OA- **	20000 psig	2.6 mL	3/8 Female NPT	0.27 kg
MP**1A- **	10000 psig	4.1 mL	3/8 Female NPT	0.51 kg
MP**2A- **	5000 psig	9.2 mL	3/8 Female NPT	1.05 kg
MP**3A- **	2500 psig	17.7 mL	3/8 Female NPT	2.1 kg
MP**1D- **	10000 psig	17.7 mL under 2500psig 4.1 ml up 2500psig	3/8 Female NPT	2.1 kg under 2500psig 0.51 kg up 2500psig
MP**2D- **	20000 psig	9.2 mL under 5000psig 2.6 ml up 5000psig	3/8 Female NPT Inlet 3/8 High Press. Outlet	1.05 kg under 5000psig 0.27 kg up 5000psig
MP**3D- **	30000 psig	9.2 mL under 5000psig 1.7 mL up 5000psig	3/8 Female NPT Inlet 3/8 High Press. Outlet	1.05 kg under 5000psig 0.15 kg up 5000psig

Dimensions

in.(mm)

Pump Type	A	B	C	D	E	H	F thread	G thread
Single Piston,Relief & Vent	3.76(95.5)	3.15 (80)	6.67(169.5)	2.25(57.2)	3.06(77.8)	2.5(63.5)	M12	M8
Single Piston	3.76(95.5)	2.36(60)	6.67(169.5)	1.46(37.2)	3.06(77.8)	1.71(43.5)	M12	M8
Single Piston,Relief	3.76(95.5)	3.15(80)	6.67(169.5)	2.25(57.2)	3.06(77.8)	2.5(63.5)	M12	M8
Single Piston,Vent	3.76(95.5)	3.15(80)	6.67(169.5)	2.25(57.2)	3.06(77.8)	2.5(63.5)	M12	M8
Double Piston, Vent	3.94(100)	3.94(100)	8.41(213.5)	3.04(77.2)	3.24(82.3)	3.29(83.5)	M12	M8
Double Piston	3.94(100)	3.94(100)	8.41(213.5)	3.04(77.2)	3.24(82.3)	3.29(83.5)	M12	M8

Ordering Code : MP-SS-1A-RV

Code	Body Material	Code	Pump Type	Code	With Relief	Code	With Vent
SS	316 SS	0A	20000 psig,Single Piston	None	No	None	No
SL	316L SS	1A	10000 psig,Single Piston	R	yes	V	Yes
S4	304 SS	2A	5000 psig,Single Piston				
CS	Carbon Steel	3A	2500 psig,Single Piston				
		1D	10000 psig,Double Piston				
		2D	20000 psig,Double Piston				
		3D	30000 psig,Double Piston				

Standard pump working Temperature range from -29°C to 120°C.
Other sizes and types available upon Request. For special requirements, please contact us.

Repair kit

Repair kit:Contains all seals

Repair Kit Ordering Code: KIT-MP-1A-RV

Code	Pump Type	Code	With Relief	Code	With Vent
0A	20000 psig,Single Piston	None	No	None	No
1A	10000 psig,Single Piston	R	yes	V	Yes
2A	5000 psig,Single Piston				
3A	2500 psig,Single Piston				
1D	10000 psig,Double Piston				
2D	20000 psig,Double Piston				
3D	30000 psig,Double Pisto				



Electrical Pump



3 Inch Body Pumps Features

- ★ Choice of 0.25 l/min, 0.45 l/min and 0.64 l/min 3 ratios.
- ★ High-strength alloy steel pump body, and stainless steel shell optional.
- ★ Low power consumption, and very low noise.
- ★ Standard Buna N seals for -29~120°C service, other seals available.
- ★ Output pressures up to 6000 psi (414 bar).
- ★ Pump can rotate clockwise and counterclockwise.

Description

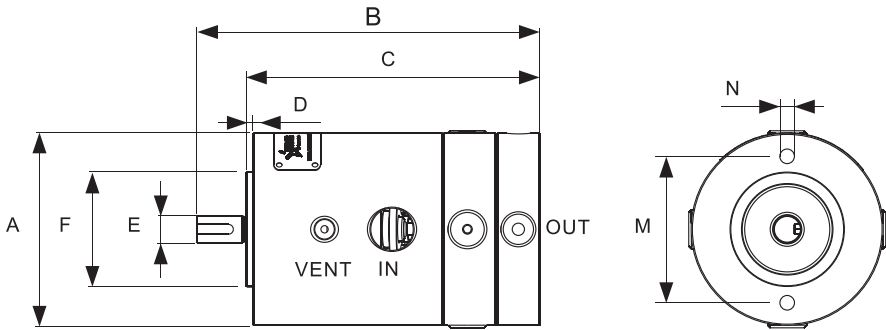
The pump is a plunger pump, it needs to be driven by a motor and recommend using electric motor. It requires very little power, so solar energy can be used as an energy source for its motor. These pumps are used on wellhead control panel systems, Power packs on high-torque service tools. The pump application medium is hydraulic oil and it needs to be installed at a lower position than the tank. Before starting the pump, you must vent the air in the pump chamber.

Performance and Specification

Ordering Code	Rated Press. psi(bar)	Max. Intermittent Press. psi(bar)	Flow at 1500rpm	Max. Speed	Stainless Steel Shell	Inlet Port	Outlet Port
ELP-3A01N	6000(414)	6000(414)	0.24l/min	3000rpm	No	1/2"NPT	1/8"NPT
ELP-3A02N	6000(414)	6000(414)	0.45l/min	3000rpm	No	1/2"NPT	1/8"NPT
ELP-3A03N	6000(414)	6000(414)	0.64l/min	3000rpm	No	1/2"NPT	1/8"NPT
ELP-3B01N	6000(414)	6000(414)	0.24l/min	3000rpm	Yes	1/2"NPT	1/8"NPT
ELP-3B02N	6000(414)	6000(414)	0.45l/min	3000rpm	Yes	1/2"NPT	1/8"NPT
ELP-3B03N	6000(414)	6000(414)	0.64l/min	3000rpm	Yes	1/2"NPT	1/8"NPT
ELP-3A01G	6000(414)	6000(414)	0.24l/min	3000rpm	No	G1/2"	G1/8"
ELP-3A02G	6000(414)	6000(414)	0.45l/min	3000rpm	No	G1/2"	G1/8"
ELP-3A03G	6000(414)	6000(414)	0.64l/min	3000rpm	No	G1/2"	G1/8"
ELP-3B01G	6000(414)	6000(414)	0.24l/min	3000rpm	Yes	G1/2"	G1/8"
ELP-3B02G	6000(414)	6000(414)	0.45l/min	3000rpm	Yes	G1/2"	G1/8"
ELP-3B03G	6000(414)	6000(414)	0.64l/min	3000rpm	Yes	G1/2"	G1/8"

1. Output flows are based on typical performance using 100 SUS (20 cSt) mineral oil at rated pressure.
2. Ordering codes listed are standard. Other materials and types are available upon request. For special requirements, please contact us.

Dimensions



Size A	3.11 in.(79 mm)	Size E	0.43 in.(11 mm)
Size B	5.56 in.(141.3 mm)	Size F	1.85 in.(47 mm)
Size C	4.77 in.(121.1 mm)	Size M	2.56 in.(65 mm)
Size D	0.11 in.(2.8 mm)	Size N	M8

4 Inch Body Pumps Features

- ★ Choice of 0.64 l/min, 1.02 l/min, 1.4 l/min and 2.1 l/min 4 ratios.
- ★ High-strength alloy steel pump body, and stainless steel shell optional.
- ★ Standard Buna N seals for -29~120°C service, other seals available.
- ★ Output pressures up to 15000 psi (1034 bar).
- ★ Pump can rotate clockwise and counterclockwise.
- ★ Large Flow, and very low noise.

Description

The pump is a plunger pump, it needs to be driven by a motor and recommend using electric motor. These pumps can be used on wellhead control panel systems, Power packs on high-torque service tools. The pump application medium is hydraulic oil and it needs to be installed at a lower position than the tank. Before starting the pump, you must vent the air in the pump chamber.

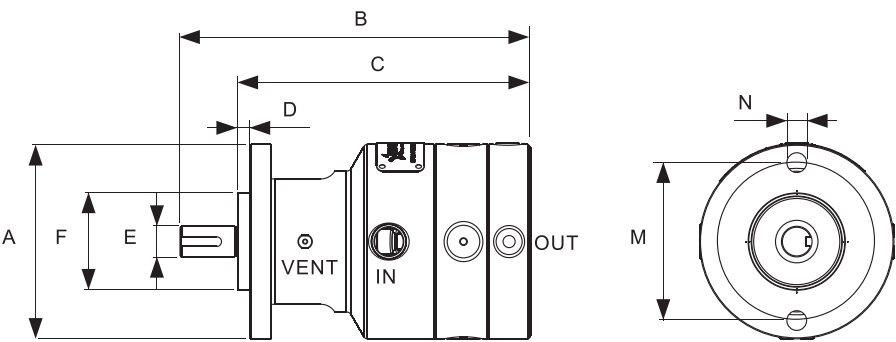
Performance and Specification

Ordering Code	Rated Press. psi(bar)	Max. Intermittent Press. psi(bar)	Flow at 1500rpm	Max. Speed	Stainless Steel Shell	Inlet Port	Outlet Port
ELP-4A03N	10000(690)	15000(1034)	0.64l/min	3000rpm	No	1/2"NPT	1/4"NPT
ELP-4A04N	10000(690)	15000(1034)	1.02l/min	3000rpm	No	1/2"NPT	1/4"NPT
ELP-4A05N	10000(690)	15000(1034)	1.4l/min	3000rpm	No	1/2"NPT	1/4"NPT
ELP-4A06N	10000(690)	15000(1034)	2.1l/min	3000rpm	No	1/2"NPT	1/4"NPT
ELP-4B03N	10000(690)	15000(1034)	0.64l/min	3000rpm	Yes	1/2"NPT	1/4"NPT
ELP-4B04N	10000(690)	15000(1034)	1.02l/min	3000rpm	Yes	1/2"NPT	1/4"NPT
ELP-4B05N	10000(690)	15000(1034)	1.4l/min	3000rpm	Yes	1/2"NPT	1/4"NPT
ELP-4B06N	10000(690)	15000(1034)	2.1l/min	3000rpm	Yes	1/2"NPT	1/4"NPT
ELP-4A03G	10000(690)	15000(1034)	0.64l/min	3000rpm	No	G1/2"	G1/4"
ELP-4A04G	10000(690)	15000(1034)	1.02l/min	3000rpm	No	G1/2"	G1/4"
ELP-4A05G	10000(690)	15000(1034)	1.4l/min	3000rpm	No	G1/2"	G1/4"
ELP-4A06G	10000(690)	15000(1034)	2.1l/min	3000rpm	No	G1/2"	G1/4"
ELP-4B03G	10000(690)	15000(1034)	0.64l/min	3000rpm	Yes	G1/2"	G1/4"
ELP-4B04G	10000(690)	15000(1034)	1.02l/min	3000rpm	Yes	G1/2"	G1/4"
ELP-4B05G	10000(690)	15000(1034)	1.4l/min	3000rpm	Yes	G1/2"	G1/4"
ELP-4B06G	10000(690)	15000(1034)	2.1l/min	3000rpm	Yes	G1/2"	G1/4"
ELP-4A03M	10000(690)	15000(1034)	0.64l/min	3000rpm	No	1/2"NPT	1/4" MF
ELP-4A04M	10000(690)	15000(1034)	1.02l/min	3000rpm	No	1/2"NPT	1/4" MF
ELP-4A05M	10000(690)	15000(1034)	1.4l/min	3000rpm	No	1/2"NPT	1/4" MF
ELP-4A06M	10000(690)	15000(1034)	2.1l/min	3000rpm	No	1/2"NPT	1/4" MF
ELP-4B03M	10000(690)	15000(1034)	0.64l/min	3000rpm	Yes	1/2"NPT	1/4" MF
ELP-4B04M	10000(690)	15000(1034)	1.02l/min	3000rpm	Yes	1/2"NPT	1/4" MF
ELP-4B05M	10000(690)	15000(1034)	1.4l/min	3000rpm	Yes	1/2"NPT	1/4" MF
ELP-4B06M	10000(690)	15000(1034)	2.1l/min	3000rpm	Yes	1/2"NPT	1/4" MF

1. Output flows are based on typical performance using 100 SUS (20 cSt) mineral oil at rated pressure.
2. MF means 20000psi female medium pressure connection.
3. Ordering codes listed are standard. Other materials and types are available upon request. For special requirements, please contact us.



Dimensions



Size A	4 in.(101.6 mm)	Size E	0.63 in.(16 mm)
Size B	7.2 in.(182.9 mm)	Size F	2 in.(50.8 mm)
Size C	6.02 in.(153 mm)	Size M	3.25 in.(82.5 mm)
Size D	0.26 in.(6.5 mm)	Size N	0.41 in(10.5mm)

Repair kit

Repair kit:Contains the main seals

Repair Kit Ordering Code: **KIT-ELP-4N**

Code	Size	Code	Seal
4	4" Body Pump	N	Buna N
3	3" Body Pump	V	Viton
		K	Kalrez